



S1 PRO / S3 PRO Electric Trolley Instruction Manual

REGISTERONLINE

www.motocaddy.com/warranty

Locating your Serial Number

Locating your Serial Number

The serial number for your Motocaddy trolley is located on the underside of the battery tray. This number is required when registering your warranty online and should be kept handy for future use.

The same number should also be on the box received with your trolley. Please ensure you keep hold of the packaging in case you need to return your trolley for any reason. A proof of purchase must also be kept in case your trolley requires servicing during its warranty period.

Please keep a record of your trolley serial number here for future reference

M	C	S												
---	---	---	--	--	--	--	--	--	--	--	--	--	--	--

Attaching the Wheels

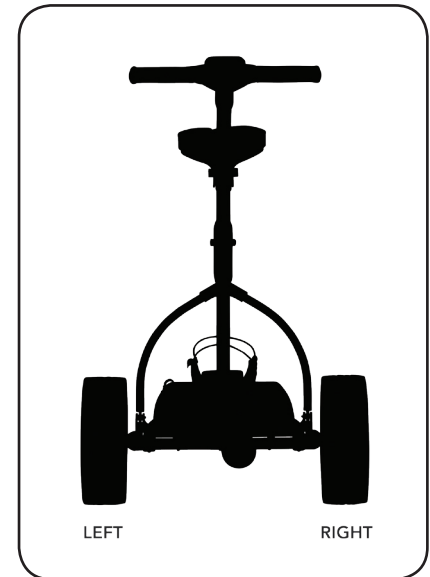
There is a left and a right wheel and it is important that you don't put them on the wrong way round, otherwise the trolley will not move. You will find there is an "L" and "R" on the inside of the wheel on the central hub. Left and Right sides are determined when stood behind the trolley at the handle.

To attach the wheels follow these simple steps:

1. Push the quick release in towards the centre of the wheel
2. Slide the wheel on to the axle as far as it will go
3. Release the button and pull the wheel outwards slightly to lock
4. A small click will confirm they are in the correct position

The outer groove can be used as a "free-wheel" option if you run out of battery power during a round of golf.

IMPORTANT : To check you have attached the wheels correctly onto the inner groove, you will find they will only rotate freely in one direction.



Battery Care and Advice

All batteries must be charged as soon as possible after each use. Leaving batteries discharged for long periods of time will affect the battery life.

Please ensure that only batteries supplied by Motocaddy are charged with Motocaddy chargers. Cyclic battery chargers are designed specifically in accordance with the battery manufacturer's requirements. The Lithium battery charger MUST NOT be used to charge any other battery and is designed for use with Motocaddy Lithium batteries only.

The charger should only be connected to an earthed socket outlet; the battery charger should only be opened and maintained by authorised personnel. Unauthorised opening will invalidate your warranty.

The battery must be stored and charged on a dry non-carpeted surface and charged at temperatures ranging between 10°C and 30°C. Charging above or below these temperatures is not recommended as it can reduce the battery capacity.

When connecting your battery to the trolley, please ensure that the connections match up black to black and blue/red to blue depending on your battery type.

Charging your Lead-acid Battery

1. Disconnect and remove the battery from the trolley
2. Plug the charger into your mains supply
3. Attach the battery cable to the charger matching the red and black connections
4. Follow the charger LED indicator stages shown below:



5. Once charging is complete please disconnect the charger from the mains power supply
6. Finally disconnect the charger from the battery

NB : Never charge the battery outside or in conditions that may allow moisture to penetrate the charger or connections. If the battery is not used for prolonged periods of time, please charge your battery at regular intervals (every 6 weeks). Please do not leave it on charge or connected to the charger.

The battery should be charged for at least 12 hours before using it for the first time, please be aware that the charger can take up to a further 8 hours to show fully charged once the battery has reached 90% charge.

Charging your Lithium Battery / Caring for your Lithium Battery

Charging your Lithium Battery

1. Unplug your lithium battery from your trolley. This should always be done before folding the trolley to avoid damage to the battery and/or trolley
2. Plug the charger into your mains supply
3. Attach the battery cable to the charger matching the black and blue connections
4. When the charging led indicator has turned green, the battery is fully charged and ready to be used

 RED - Battery Charging   GREEN - Battery fully charged and ready to be disconnected

5. The charging process will take between 3 to 5 hours depending on the depth of discharge (please be aware that this may take longer for the first few charges)
6. Once charging is complete please disconnect the charger from the mains power supply
7. Finally disconnect the charger from the battery

Caring for your Lithium Battery

- Try to avoid getting the battery too wet (i.e. do not submerge the battery, try to avoid deep puddles and do not clean your trolley whilst battery is still in the battery tray)
- Dropping the battery may cause damage to the internal cells
- Do not lift or carry the battery by the cable
- Use a damp cloth to clean off any dirt

Recommendations for the hibernation of Lithium Batteries during Winter months

If for any reason your lithium battery is not going to be used for lengthy periods, e.g. 3 months over the winter, it is advised to store the battery half charged. To do this simply use the battery for a round of golf as usual and charge it for 1.5 hours at the end of the round. Before the battery is used again, recharge it (top it up) prior to use. We recognise that extended absences are not always planned in advance, however when it is likely that you will not be using your battery for a period of time it is good practice to follow these steps to extend the life of your lithium battery. Please ensure that the charger is ALWAYS disconnected from the battery after charging.

Lithium Battery Management System (BMS)

Motocaddy Lithium Batteries are fitted with a comprehensive battery management system (BMS) to protect the battery from excessive abuse, high currents, deep discharge and overcharge. When the battery is delivered there may be no output as the BMS is designed to maximize safety whilst shipping. Please ensure that the battery is fully charged prior to connecting it to your trolley as this will activate the BMS and effectively “switch-on” the battery. From time to time, at deep discharge or long term storage the BMS may switch-off the battery. A full battery charge will rectify this problem.

Motocaddy golf trolleys are designed to work with the BMS system installed in the Lithium batteries and the voltage meter is also synchronised to work in conjunction with the battery. If for any reason the voltage on the battery reaches that below the low battery warning on the trolley, then the BMS may disable the battery to protect it. Again if this occurs please recharge fully. Please be aware that Lithium batteries tend to “drop off” quickly at the end of the cycle so it is not advisable to attempt to play excessive holes as the BMS will activate for protection purposes.

Unfolding your Trolley

This Motocaddy trolley is fitted with the new QUIKFOLD™ system, allowing you to fold and unfold your trolley quicker than ever before.

Unfolding your Trolley

1. Press and hold the upper QUIKFOLD™ release button (fig. 1)
2. Lift the handle and release the button
3. Unfold the upper frame section fully (fig. 2)
4. Lift the main frame from the central hinge using the section marked "Hold Here" until the QUIKFOLD™ lock clicks into position (fig. 3)
5. Unfold the upper bag support

PLEASE NOTE : Do not lift from the handle (step 4 above) as this will complicate the folding process.

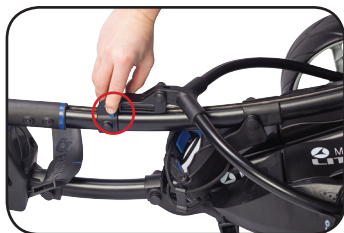


Fig 1



Fig 2



Fig 3

Folding your Trolley

1. Make sure your battery is unplugged and if you have a Lead-acid battery you will need to remove this from the battery tray
2. Ensure that the upper bag support has been folded up
3. Press and hold the lower QUIKFOLD™ release button (fig. 1)
4. Lower the main frame (fig. 2) and release the button
5. Fold the handle towards the front wheel until the QUIKFOLD™ system clicks into position (fig. 3)

You may need to gently push as indicated if you do not hear a click (fig. 4).



Fig 1



Fig 2



Fig 3



Fig 4

Using the Lower Bag Supports

Using the Lower Bag Supports

This Motocaddy trolley is fitted with the new EASILOCK™ bag attachment system.

If you are using an EASILOCK™ compatible cart bag please follow these simple instructions:

1. Remove the two pre-fitted lower bag straps by depressing the rear button and sliding (fig. 1)
2. Match up the indicating line on your cart bag with the line on the lower bag support
3. Lower bag until the pins lock in position

If you are using a non-EASILOCK™ bag, please use the following instructions:

1. Stretch the elasticated strap around the bag
2. Loop the rounded bar underneath the hook (fig. 2)
3. Position the two placement straps centrally on your cart bag (fig. 3)

Please ensure the straps are hooked in place securely before releasing.
Failure to do so could result in injury to the user.



Fig 1



Fig 2



Fig 3

Using the Upper Bag Supports

The upper bag support straps can be secured using the same steps as the non-EASILOCK instructions overleaf:

1. Stretch the elasticated strap around the bag
2. Loop the rounded bar underneath the hook (fig. 2 left)
3. Position the two placement straps centrally on your cart bag (fig. 3 left)

Adjusting the Bag Supports

The bag support straps are manufactured from elasticated material to allow your golf bag to be held tightly in place.

The strap should be adjusted to be reasonably tight around the golf bag:

1. Unclick the elasticated straps from the housing by pulling outwards in the direction shown by the arrows (fig. 1)
2. Move the bar as required to tighten or loosen the strap fitting. Pulling the bar downwards will tighten, pushing it upwards will loosen (fig. 2)
3. Ensure that the straps are clipped back in to the housing before use (fig. 3)

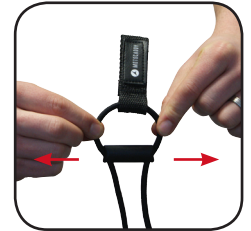


Fig 1



Fig 2



Fig 3

Safety Cut-out / Safe use of your Trolley

Safety Cut-out

Your Motocaddy trolley is fitted with a safety cut out feature which will help prevent damage to your trolley in the event of it being inadvertently switched on and in a position where it is not able to move for 30 seconds. If this should occur, the trolley will automatically cut the power to the motor.

If your trolley has cut out for this reason you will see the following on the display:

- For an S1 PRO the LED panel will display an "L" where the speed setting would usually be shown and the left hand LED will still be lit (fig. 1)
- For an S3 PRO the screen will flash "LOAD" where the distance would usually be displayed and the blue circle will still be rotating (fig. 2)

Pressing the on/off button will reset your trolley.

Safe use of your Trolley

- Your Motocaddy trolley is designed for the transportation of golf bags and clubs contained within. Using the trolley for any other reason may cause damage to the trolley and cause harm to the user
- Do not attempt to transport any other equipment
- The trolley is not designed for the transportation of people
- Do not use the trolley to assist you when going up hills



Fig 1



Fig 2

- Submerging the trolley in water (eg a lake) is likely to cause damage to the trolley
- Do not operate the trolley whilst under the influence of drugs or excessive amounts of alcohol
- All batteries must be disconnected from the trolley before transporting
- Lead acid batteries must be removed from the battery tray before transporting your trolley
- Always use the carry strap when moving and transporting lead acid batteries

Caring for your Trolley

Although your Motocaddy Trolley has been weatherproofed, please follow these simple guidelines to help protect your trolley:

- Do not store your trolley outside
- Try to minimise exposure to rain as much as possible with an umbrella during heavy rainfall
- Wipe excess water from the trolley prior to storage
- Never use a pressure washer to clean your trolley. To prevent water damage, wipe it down with a damp cloth
- Avoid using high pressure air hoses near moving components

Your Motocaddy trolley is designed to require very little maintenance; we do however recommend giving your trolley regular checks to ensure:

- There is no build up of excess mud and dirt
- The front wheel nut is on tightly and quick release lever is clamped down
- The front wheel is not clogged up and turns freely
- The battery bag and strap are intact and not damaged (lead acid batteries only)

Only original Motocaddy parts should be used when repairing your trolley.

Using the USB Charging Port

Using the USB Charging Port

This Motocaddy trolley features a USB charging port designed to power GPS devices during your round.

Simply remove the covering cap and plug a USB cable into the charging port located on the underside of the handle. The device will continue charging for the duration of time that the cable is attached and the battery is connected.

It is important to note that the speed of charge will be lower than that of a mains AC charger and similar to plugging the device into a PC.

The USB charger takes power from the main trolley battery and continuous charging will reduce the battery capacity between charges. The trolley is designed to disable the USB port when the battery capacity reaches a preset level.

Adjusting the Front Wheel Alignment if your trolley is veering

In the unlikely event that your trolley is not tracking in a straight line, the alignment of the front wheel can be adjusted to rectify the fault. This problem can be caused by a number of factors including a slightly loose bag support or an unevenly packed golf bag. Should you wish to alter the alignment of the front wheel, follow these simple steps:

1. Lift the quick release lever positioned on the front wheel housing and loosen the wheel nut (fig. 1)
2. There are two small metal dials on either side of the housing that are used to realign the wheel (fig. 2)
3. If your trolley is veering to the right, you will need to turn the left hand dial clockwise and the right hand dial anti-clockwise
4. If your trolley is veering to the left, you will need to turn the right hand dial clockwise and the left hand dial anti-clockwise
5. Tighten the wheel nut and push down the lever to lock the wheel back into place (fig. 3)

This procedure can be carried out until you are happy the trolley is moving in a straight line (please note you may only need to adjust one dial at a time).

PLEASE NOTE : These instructions are based on being in front of the trolley looking at the wheel.



Fig 1



Fig 2



Fig 3

S1 PRO Equipment Overview

S1 PRO Equipment Overview

1. Digital Control Panel
2. Upper Bag Support
3. QUIKFOLD™ Upper Release Button
4. QUIKFOLD™ Lower Release Button
5. Rear Wheels
6. Rear Wheel Release Button
7. EASILOCK™ Lower Bag Support
8. Battery
9. Battery Tray
10. Motor (located under Battery Tray)
11. Front Wheel
12. Front Wheel Alignment Adjusters
13. Battery Connector
14. USB Charging Port



Using your S1 PRO

The S1 PRO is extremely simple to control. There is one main button that is used to turn the trolley on and off, whilst also controlling the speed of the trolley. The speed can be adjusted while the trolley is stationary or in motion. The trolley has 9 speed settings (1 to 9) with 1 being the slowest setting and 9 the fastest. To increase the speed, rotate the speed dial clockwise, or anti-clockwise to decrease the speed.

To start the trolley, simply select your required speed setting and press the button. The trolley will smoothly accelerate until it reaches the selected speed. To stop the trolley, simply press the button again - there is no need to reduce the speed setting.

Power and Battery Level

There are two indicating LEDs below the speed display. The right hand LED displays the battery capacity (green, amber & red) and will illuminate as soon as the battery is plugged in. The left hand LED will illuminate when the power is on. The trolley is designed to protect your battery from being fully discharged, should your battery capacity drop too low the trolley will cut the power to the motor. If this should happen you will see "b" flashing on screen.



S1 PRO - Using the Adjustable Distance Control

Using the Adjustable Distance Control

The S1 PRO features a basic, easy to use adjustable distance control which will allow you to send you trolley ahead of you from 15-45 meters.

1. Whilst stationary select the speed that you wish to set your trolley off at
2. Hold down the on/off button for a couple of seconds, you will see the outer digits of the LED display rotate once clockwise. Then "1" will be flashing on the display, there are three settings for the distance, 1 = 15 meters, 2 = 30 meters and 3 = 45 meters
3. Turn the button clockwise to increase and anti-clockwise to decrease to your preferred distance setting
4. Press the on/off button to set the trolley off in motion. Whilst the trolley is in motion using ADC, the left hand indicating LED will flash
5. The trolley can be stopped manually by pressing the button again

In the unlikely event that your trolley fails to register distance whilst in ADC mode, the trolley will cut power to the motor to prevent the trolley from travelling too far. The trolley screen will flash "E" to indicate that this safety feature has been instigated.

The trolley can be reset by pressing the on/off button once, thereby allowing you to continue to use the trolley with ADC disabled until you are able to contact our technical support team.



S3 PRO Equipment Overview

1. Digital Control Panel
2. Upper Bag Support
3. QUIKFOLD™ Upper Release Button
4. QUIKFOLD™ Lower Release Button
5. Rear Wheels
6. Rear Wheel Release Button
7. EASILOCK™ Lower Bag Support
8. Battery
9. Battery Tray
10. Motor (located under Battery Tray)
11. Front Wheel
12. Front Wheel Alignment Adjusters
13. Battery Connector
14. USB Charging Port



S3 PRO - The Advanced Digital Control Panel / Operating the Digital Functions

The Advanced Digital Control Panel

1. Speed Setting
2. Clock
3. Round /Lost Ball Timer
4. Battery Meter
5. Battery Setting
6. Distance Reading
7. Scroll Button
8. USB Charging Port
9. Speed Controller & On/Off
10. Set Button

Operating the Digital Functions

To activate the control panel you need to connect the battery to the trolley. When the display activates, the speed setting number located within the blue circle will indicate the speed the trolley will set off at once started. The solid blue circle will rotate when moving.



NB : Please be aware that certain moisture, temperature and humidity conditions can result in localised misting within the display screen. This will not affect the trolley functionality, nor cause any damage and will return to normal when adverse conditions subside.

Setting the Time

1. Press and hold the "Set" button for three seconds until the "minutes" start flashing
2. Set the minutes by pressing the "Scroll" button, each press will increase the time by one minute
3. To toggle to the hour press the "Set" button again
4. Set the hour in the same way as you did the minutes
5. Once the time is correct, press and hold the "Set" button for three seconds to confirm

Battery Meter

The battery meter on the digital display is set to measure capacity of the standard battery as default. To enable accurate measurement of lithium battery capacity, please follow the procedure below:

1. Hold down the "Scroll" button while plugging in the battery and release the button once the screen illuminates
2. Press the "Scroll" button to toggle between "S" (Standard / Extended Range Battery) and "L" (Lithium Battery)
3. Unplug the battery and leave for five seconds before reconnecting ready for use

NB : Please note that during this process the Pin Code may also be set. If you do not wish to set a pin code please only use the Scroll button ("Set" button is used to set the pin code).

The trolley is designed to protect your battery from being fully discharged, should your battery capacity drop too low the trolley will cut the power to the motor. If this should happen you will see the battery meter flashing on screen.

S3 PRO - Starting, Stopping & Changing Speed / Using the Adjustable Distance Control

Starting and stopping the trolley and changing the speed

The speed can be adjusted while the trolley is stationary or in motion, rotate the central button clockwise to increase the speed setting and anti-clockwise to decrease. You will see the number in the blue circle changing accordingly. The settings run from 1 (slowest) to 9 (fastest). We recommend using setting 3 for the first time. To start the trolley, simply press the button. To stop it, press the button again - there is no need to decrease the speed before stopping as it is designed to smoothly accelerate back to the required speed. You will notice the blue circle rotates when you press the button, this indicates that the power is on.

Using the Adjustable Distance Control

1. Whilst stationary, select the speed that you wish to set your trolley off at
2. Hold down the central 'on/off' button for a couple of seconds
3. The Distance display will change to indicate '05' (5 yards or metres) and the word 'ADC' will appear.
4. Turn the button clockwise to increase the distance and anti-clockwise to decrease accordingly
5. Press the button down once to set the trolley off in motion
6. The distance will count down in increments of 1 yard or metre until the desired distance is reached. The trolley can be stopped at any stage by pressing the central button down once

In the unlikely event that your trolley fails to register distance whilst in ADC mode, the trolley will cut power to the motor to prevent the trolley from travelling too far. The trolley screen will flash "dist" to indicate that this safety feature has been instigated.

The trolley can be reset by pressing the on/off button once, thereby allowing you to continue to use the trolley with ADC disabled until you are able to contact our technical support team.



Distance Readouts

There are three different distance readouts – “Distance 1”, “Distance 2” and “Total Distance”. You can toggle through them at any time by pressing the “Scroll” button. We recommend using “Distance 1” to measure your drives or particular shots during your round. To reset the reading, press the “Set” button (this must be done whilst the display shows “Distance 1” and round time is not flashing). To get an accurate reading you need to turn on your trolley and walk directly to your golf ball. We appreciate that you will not always be able to walk directly to your golf ball - however when you can it's great fun to see how far you've hit it and our system measures with incredible accuracy.

You can change the distance readings from yards to meters (or vice versa) by pressing and holding the “Scroll” button for 3 seconds.

Please note the trolley will only measure distance whilst it is switched on and the motor is running (i.e. if you push the trolley along when it is switched off the distance readings will not increase). The measurements are taken from the revolutions of the axle, so please be aware that if you let your trolley run off down a hill on its own the readings will not be 100% accurate. We recommend you always walk within a few steps of your trolley and do not let it run off ahead of you.

We recommend using “Distance 2” to measure your approach shots. For example you could align your S3 with the 150 yard marker and accurately measure how far past it your ball is. Similarly to “Distance 1”, pressing the “Set” button will reset the distance at any time. Please note if you unplug the battery, “Distance 1” and “Distance 2” will be reset.

“Total Distance” cannot be reset, even if you unplug the battery. This shows how far the trolley has travelled in its lifetime. You can toggle to it by pressing the “Scroll” button. This reading is displayed in miles or km. Toggle between miles or km by holding down the “Scroll” button for 3 seconds.

S3 PRO - Using the Lost Ball Timer / Round Timer

Using the Lost Ball Timer

To use the lost ball timer you must first toggle through the distance readings using the "Scroll" button until the display shows "Distance 1" and the timer is flashing (fig. 1). To start the timer, press the "Set" button. Once the timer has started it will stop flashing, it will then count up to 5 minutes. When it reaches 5 minutes the trolley will beep for 5 seconds. You can stop the timer before it beeps at any time by pressing the "Set" button again.

You can test that your lost ball timer is working by doing the following:

Press and hold the "Set" button whilst plugging in the battery, the alarm should beep twice if operating correctly. After the second beep the trolley will be on and ready to use.

Using the Round Timer

The round timer will automatically start counting when you first set off, you can reset the round timer at the start of each round. To reset the round timer you must first toggle through the distance readings using the "Scroll" button until the display shows "Distance 1" and the round time is flashing (fig. 2) then press the "Set" button to reset the round timer.



Fig 1



Fig 2

How to use Competition Mode

It is possible to temporarily disable the distance measuring functions using the competition mode should competition rules dictate. It is recommended that you always check competition rules before using your Motocaddy S3 PRO with distance readings enabled. To enable competition mode follow the steps below:

1. Whilst stationary, hold down the "Scroll" and "Set" buttons together for three seconds
2. The distance readings will be removed from the screen and the words 'COMP MODE' will appear
3. To return your trolley to normal mode, simply perform the procedure indicated in step 1 once more



S3 PRO - Setting the Security Pin Code

Setting the Security Pin Code

The S3 PRO also comes with the option of enabling a security feature to make the trolley unusable for potential thieves. There is no pin-code set when the trolley is manufactured but this can be set using the steps below:

1. Press and hold the "Scroll" button whilst connecting the battery to the trolley, release the button once the screen has lit up
2. Use the 'On/Off' button to choose the first number of your pin code (0-9) (fig. 1). Turn clockwise to increase the number or anti-clockwise to decrease
3. Press the "Set" button to confirm your choice
4. Repeat step 2 and 3 for each of the four digits
5. Once you have entered the fourth number and pressed the "Set" button the blue circle will illuminate to indicate a valid pin code has been entered (fig. 2)
6. Unplug the battery and leave for a few seconds

When you next connect your battery, the trolley will ask you to enter the pin code that has been set. This can be done using the on/off button to select the number and the "Set" button to confirm.

IMPORTANT : Before pressing the "Set" button for the fourth time please check that the desired pin code is correct. It may be worth keeping a record somewhere of the pin code you have set, if you forget the pin code that has been entered the trolley will need to be returned to Motocaddy to be reset (this will incur a charge)



Fig 1



Fig 2

Changing the Pin Code

You can change your pin number at any time using the following steps:

1. Press and hold the "Scroll" button whilst connecting the battery to the trolley, release the button once the screen has lit up
2. First you will need to enter your existing pin where the time would usually be displayed (fig. 1)
3. Once the correct pin has been entered, you will be able to enter a new pin where the distance would usually be displayed (fig. 2)

Disabling the Pin Code

To disable the security feature, follow the procedure for changing your pin code and when you get to the stage of entering a new pin code, enter four zeros as the new code.

Once you have entered the fourth zero and pressed the "Set" button, the blue circle will illuminate to indicate the pin code has been accepted. This will return it to its factory setting.

PLEASE NOTE : When setting or changing the pin code you can also change the battery setting. If you do not wish to do this, do not press the "Scroll" button again once the screen has lit up.



Fig 1



Fig 2

Troubleshooting

In the unlikely event that your trolley develops a fault, you can be confident that your Motocaddy has been designed with an easy diagnosis system and incredibly simple parts to change.

Should your trolley develop a fault please follow the easy to use diagnosis diagrams (pages 29 & 30).

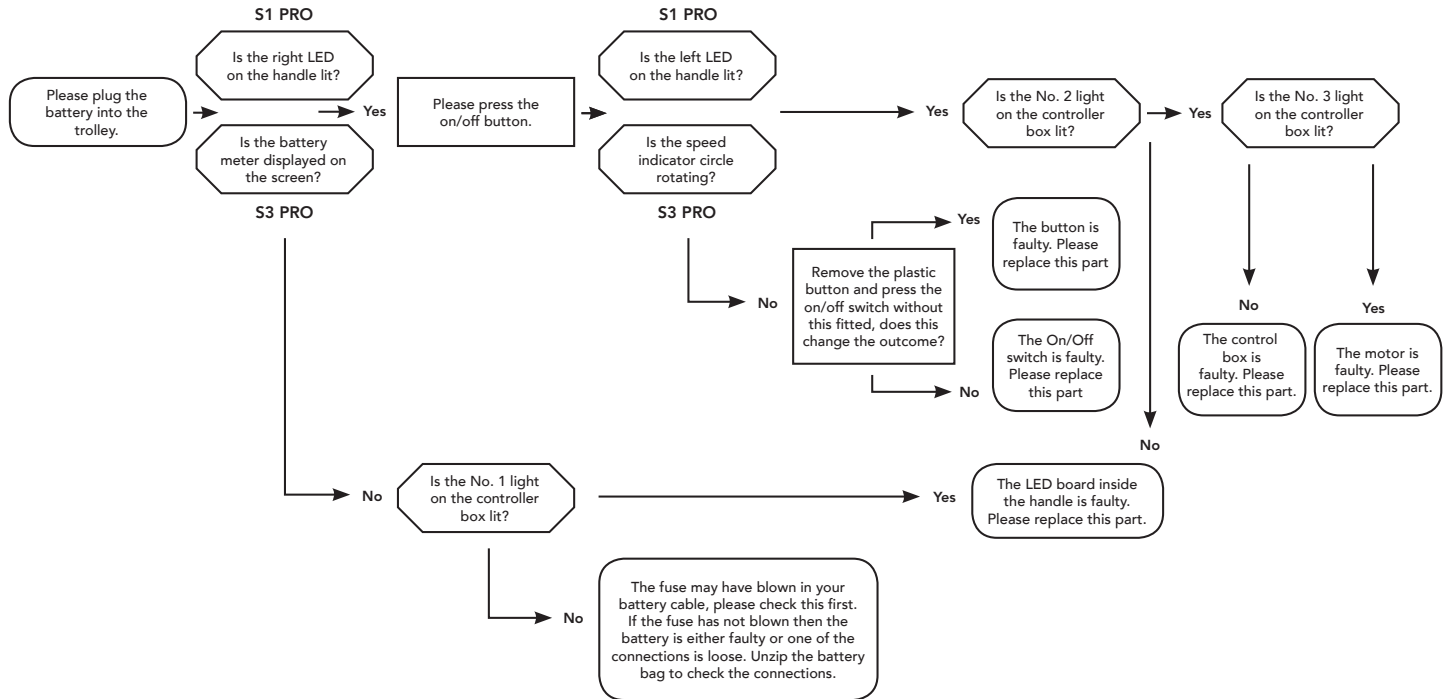
Whilst running through the diagnosis diagrams it is recommended that you place your trolley in the folded position and remove the wheels to enable easy handling.

PLEASE NOTE : The lights on the controller box are numbered as described within the troubleshooting diagram.

1) In the event that your trolley will not complete 18 holes after a full charge:

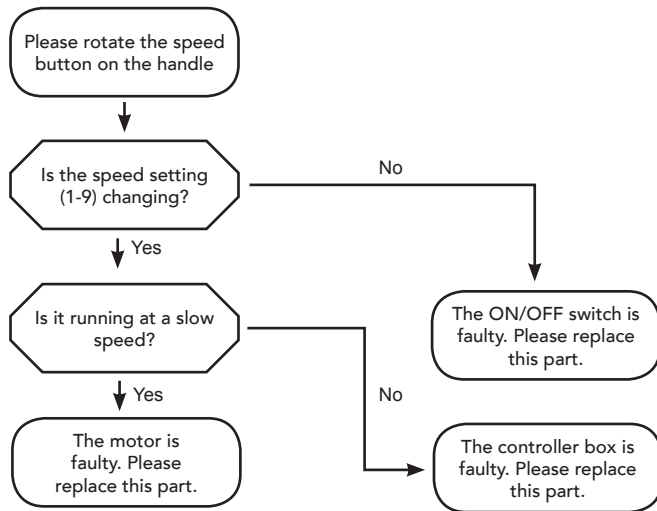
If this is the first time that your trolley has failed to complete 18 holes then we would suggest that you re-charge your battery as soon as possible and make sure that it has a full charge and the charger is functioning correctly. Once charged please try using the battery for one more round in case it had not charged properly before it's last outing. If your battery then fails to complete 18 holes again please contact our customer service team on 0845 058 9818.

2) If your trolley will not move please run through the following:



Troubleshooting

3) If your trolley is moving but is only going one speed, please run through the following:





DECLARATION OF CONFORMITY

ORIGINAL

Business Name and Full Address of Manufacturer

Motocaddy Ltd - Units 15-18 Stansted Distribution Centre,
Start Hill
Great Hallingbury

Hertfordshire
CM22 7DG

Name and Address of Authorised Representative

-

Name and Address of the Person in Community Authorised to compile the Technical File (If different to above)

-

Description of product (Commercial Name)

Motocaddy Electric Trolley

Function, Model, Type, Serial Number

Function: Electric Trolley

Model: S1/S1 PRO/S3 PRO/M1 PRO/M3 PRO

Type: Motocaddy Digital Range

S1 PRO DHC/S3 PRO DHC

Standards Used

BS EN ISO 12100 2010

Place of Declaration

Units 15-18 Stansted Distribution Centre,
Start Hill
Great Hallingbury

Hertfordshire
CM22 7DG

Date of Declaration Tuesday, January 01, 2013

Declaration

I declare that the machinery fulfils all the relevant provisions of the following Directives:- Low Voltage Directive 2006/95/EC, Electromagnetic Compatibility Directive 2004/108/EC.

Person Empowered to Draw Up Declaration

Name: Tony Webb

Position: Managing Director

Signature:



Motocaddy Ltd, Units 15 - 18 Stansted Distribution Centre,
Start Hill, Great Hallingbury, Hertfordshire, CM22 7DG

t: +44 (0) 845 058 9818 e: info@motocaddy.com w: www.motocaddy.com



We are dedicated to protecting the environment and encourage the recycling of Motocaddy products through a free collection and disposal service. To find out more or to locate your nearest Motocaddy recycling point, please contact us through our website or by calling 0845 058 9818.

MC.14.18.001